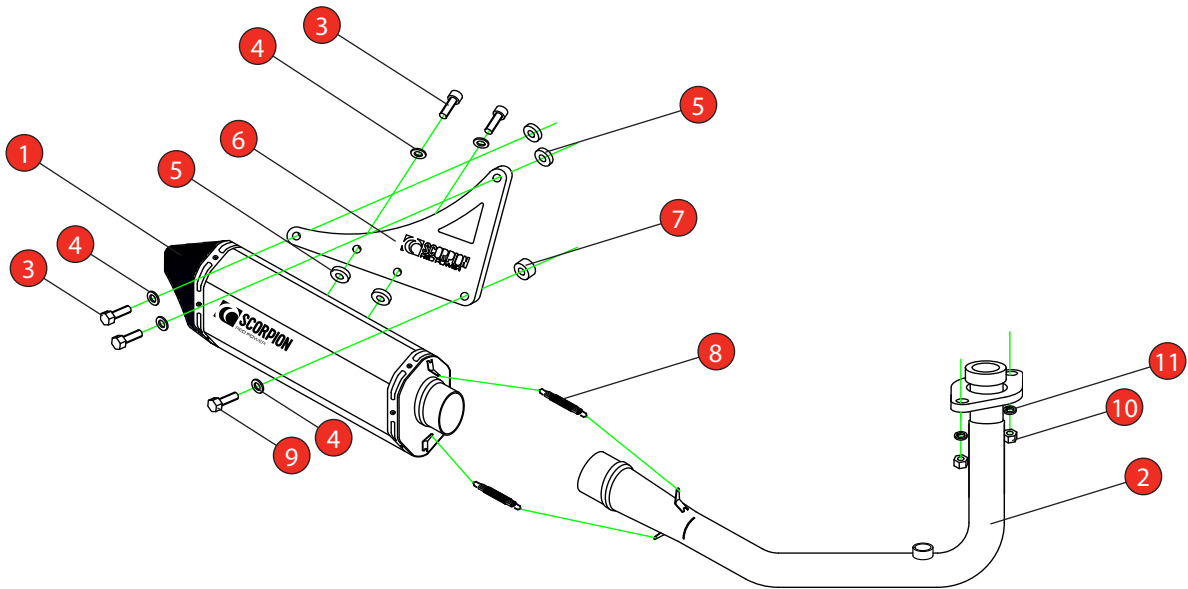


Bike	Scomadi TL200	Part No.	RSM-55
Year	2018-Current	Fit Kit	Z039.10590
Notes	Where not supplied use original fittings	dB Killer	SCEXDBK45 (TYPE AB)

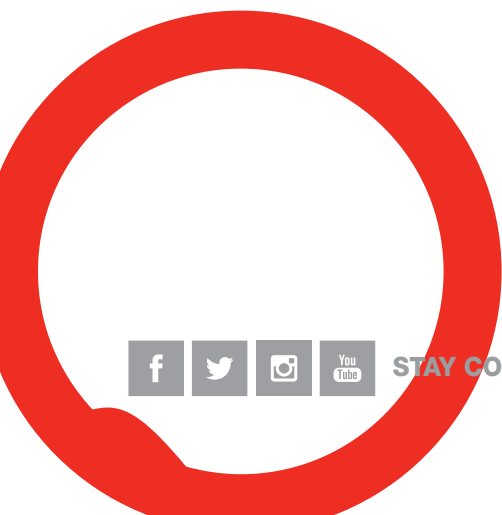
Estimated Fitting Time: 60 Minutes



NO.	PART NO.	DESCRIPTION	QTY
1	RSC378	Serket Silencer	1
2	CP917	Connecting Pipe	1
Fit Kit - Z039.10590			
3	Z017.10047	M8 x 25mm Hex Head Bolt	4
4	Z017.10831	M8 x 17mm Washer	5
5	Z026.10004	M8 x 10mm Alloy Spacer	4
6	Z007.31451	Mounting Bracket	1
7	Z026.10005	M8 x 15mm Alloy Spacer	1
8	Z028.10030	Rubber Coated Spring	2
9	Z017.10049	M8 x 30mm Hex Head Bolt	1
10	Z017.10063	M8 Nut	2
11	Z017.10064	M8 Spring Washer	2

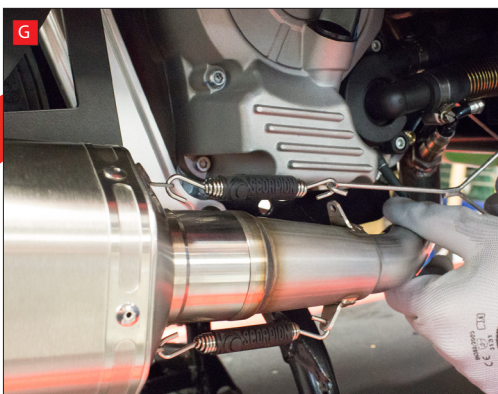
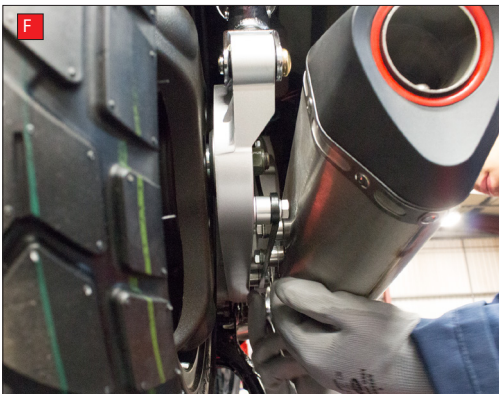
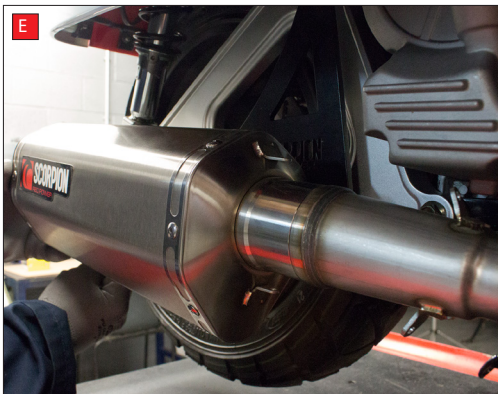
E-MARK	bsau 193a 1990/t3
DATE	20/07/18
ISSUE	00
AUTHORISED	M.Ydlibi

NOTE: ENSURE SCORPION SYSTEM IS CLEAR OF MOVING PARTS AND ALL ORIGINAL FUNCTIONS WORK CORRECTLY.



STAY CONNECTED TO RED POWER.

Car	Scomadi TL200	Part No.	RSM-55
Year	2018-Current	Fit Kits	Z039.10590
Notes	Where not supplied use original fittings	dB Killer	SCEXDBK45 (TYPE AB)



A) Remove original exhaust, taking care not to lose or damage any of the original components.

B) Loosely fit Scorpion header pipe.

C) Refit the lambda sensor into the boss on the Scorpion header pipe.

D) Loosely fit the mounting bracket to the silencer ensuring the bottom left bolt is trapped between the silencer and bracket.

E) Following the line diagram above, mount the silencer to the bike.

F) Once you're happy the silencer is fitted correctly, tighten all fittings.

G) Fit the springs to secure the collar fitting between the silencer and header pipe.

H) When fitted, take bike for a short test run, upon return allow bike to cool and check all nuts and bolts are secure.

Bike	Scomadi TL200	Part No.	RSM-55
Year	2018-Current	Fit Kit	Z039.10590
Notes	Where not supplied use original fittings	dB Killer	SCEXDBK45 (TYPE AB)



A) Remove original exhaust from bike, taking care to keep all original components in a safe place.

B) Refit Scorpion exhaust as per line diagram above.

C) When fitted take bike for a short ride to ensure all functions are correct.

D) When bike & exhaust are cool enough check all nuts and bolts are still secure.

Thank you for purchasing your Scorpion Silencer.

Care of your exhaust: Please refrain from cleaning silencer with heavy solvents or abrasives!

Vielen Dank Für den kauf eines Scorpion Schalldampfers! Pflegehinweis: Bitte verwenden Sie niemals Scheuermittel oder aggressive Reiniger zur Pflege Ihres Auspuffes!

Merci d'avoir choisi un echappement Scorpion.

Entretien de votre silencieux: Ne pas utiliser de solvants ou de produits abrasifs!

Muchas gracias por adquirir un Silencioso Scorpion. Le recomendamos no limpiar el silencioso con productos abrasivos o aquellos que contengan disolventes.



STAY CONNECTED TO RED POWER.