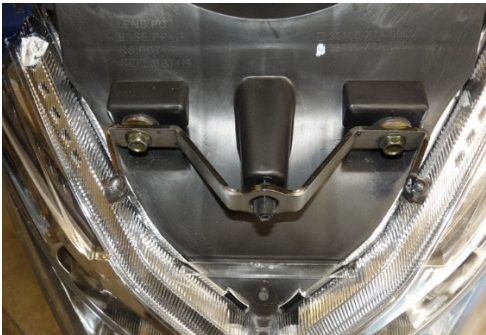


SYM JET14 MOUNTING INSTRUCTION



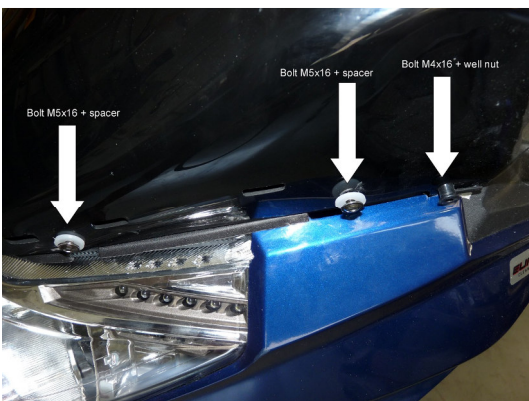
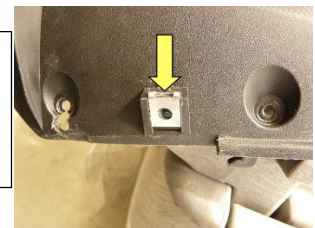
Remove the pointed 9 screws and take off the dashboard cover

Enlarge the pointed holes up to $\varnothing 8.5$

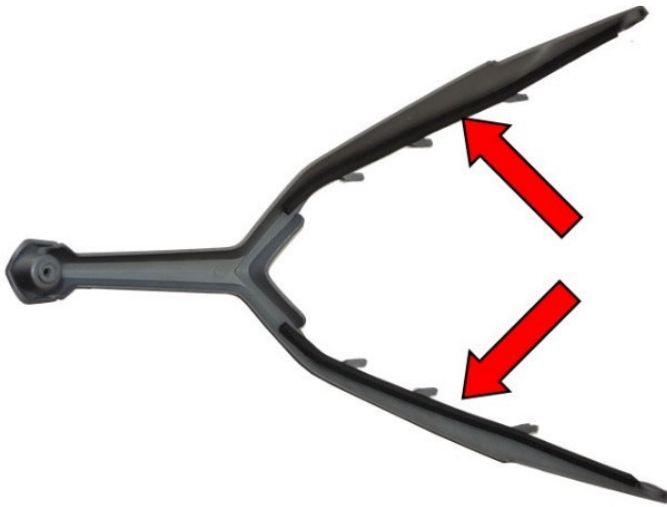


Using the original bolts and washers, center and fix the provided bracket and welded bushes in up position; put on again the dashboard cover and fix it

Insert, one per side, the metric clip in the back fixation room on the dashboard cover



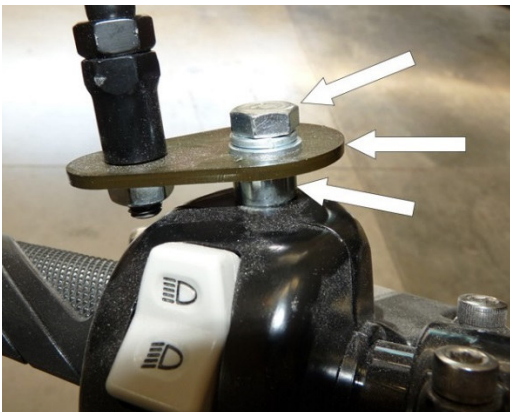
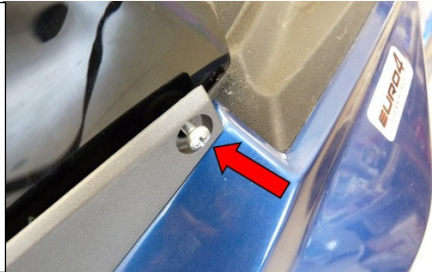
Fix the windshield using bush and screw M5x16 for the front fixation, bush and screw M5x16 for the rear and the well nut in the hole



Apply both foam strings inside the “Y shape” cover just below the hooks



Fix the Y shape cover stick with care the hooks into the windshield; use the provided screw M4x16 for the rear fixation



Fit the mirrors using the provided spacers, plates, washers and m8 bolts